



Release Notes

IBM DOC 4.0.3

December 21, 2022

We're pleased to announce the release of the IBM Decision Optimization Center (DOC) 4.0.3 version before the end of 2022. This release provides you with improvements in the UI and new widgets to increase the data visualization and analysis options in your dashboards.

The latest version of DOC includes several UI enhancements, such as:

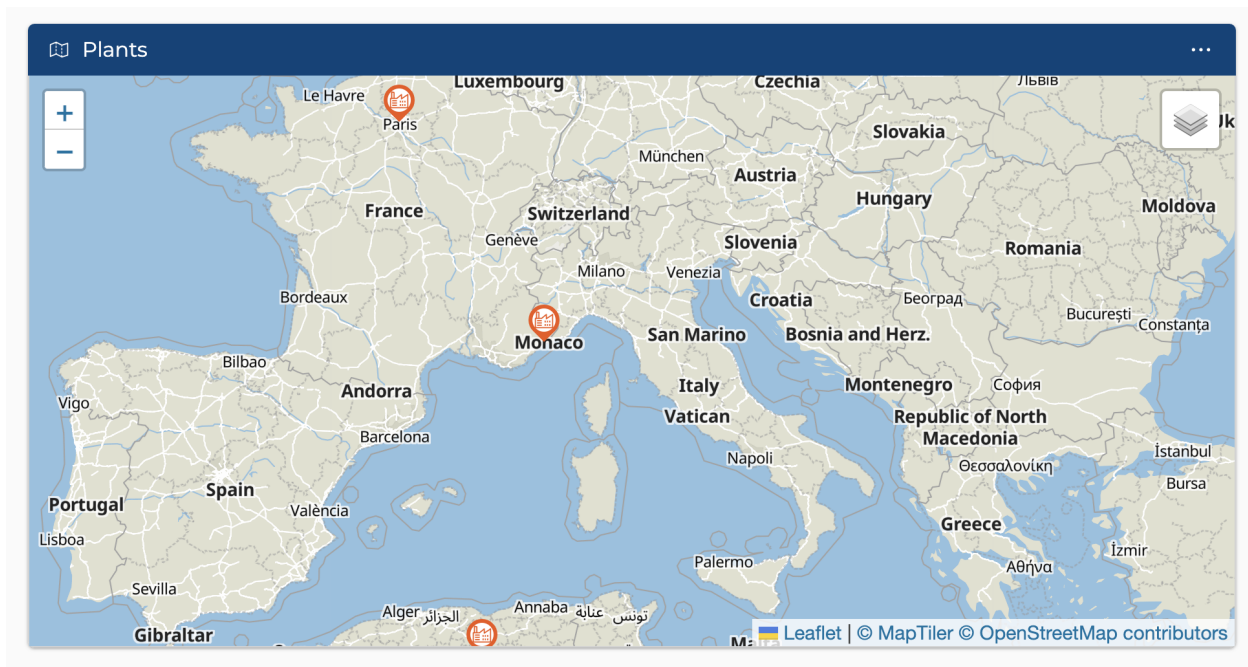
- New interactive map widget, useful for strategic design, routing and logistics applications among others. Highly customizable design with support for different languages, fonts, colors - control every aspect of your map.
- New calendar widget for easily displaying events by day/week/month or by list - useful for planning and scheduling applications across various time horizons
- New horizontal chart widget, useful for displaying data with long category names or a large number of categories
- Streamlined data type mapping to easily incorporate Tableau widgets into dashboards
- Conditional formatting in data-grids to enable a more Excel-like experience for users
- New Composite Widgets - enables a widget to be composed of 2 or more widgets separated by a draggable split bar or organized into tabs

DOC 4.0.3 also includes the following enhancements:

- Support for Mac M1/M2 so that users can scaffold, build, run and deploy applications from the latest Macs powered by Apple Silicon CPUs
- Job auto-cleaning - For application deployed into production, job auto-cleaning can automatically remove old jobs based on max-age and/or the maximum number of jobs to keep in the database
- Library updates, including support for Keycloak-19 - Quarkus distribution, which improves application startup time and resource usage

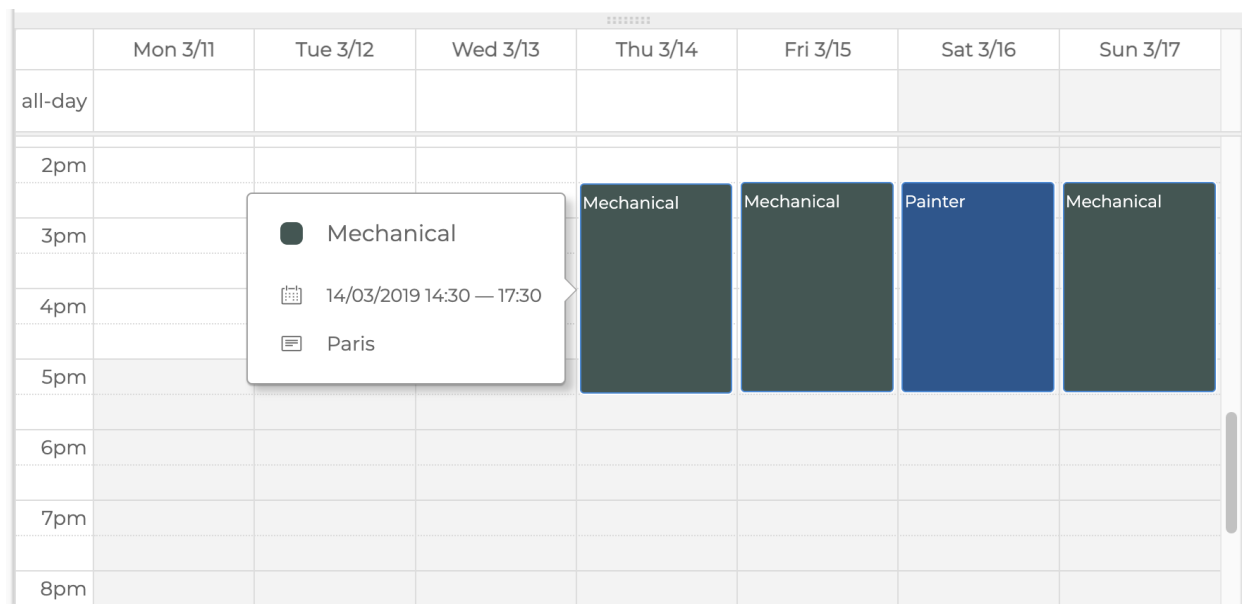
Integration of Map Widget

The Map widget is now available in DOC 4.0.3 out of the box!



Calendar Widget

DOC 4.0.3 has a new Calendar widget that allows displaying events, scheduled activities and tasks in a calendar by day/week/month or by list.



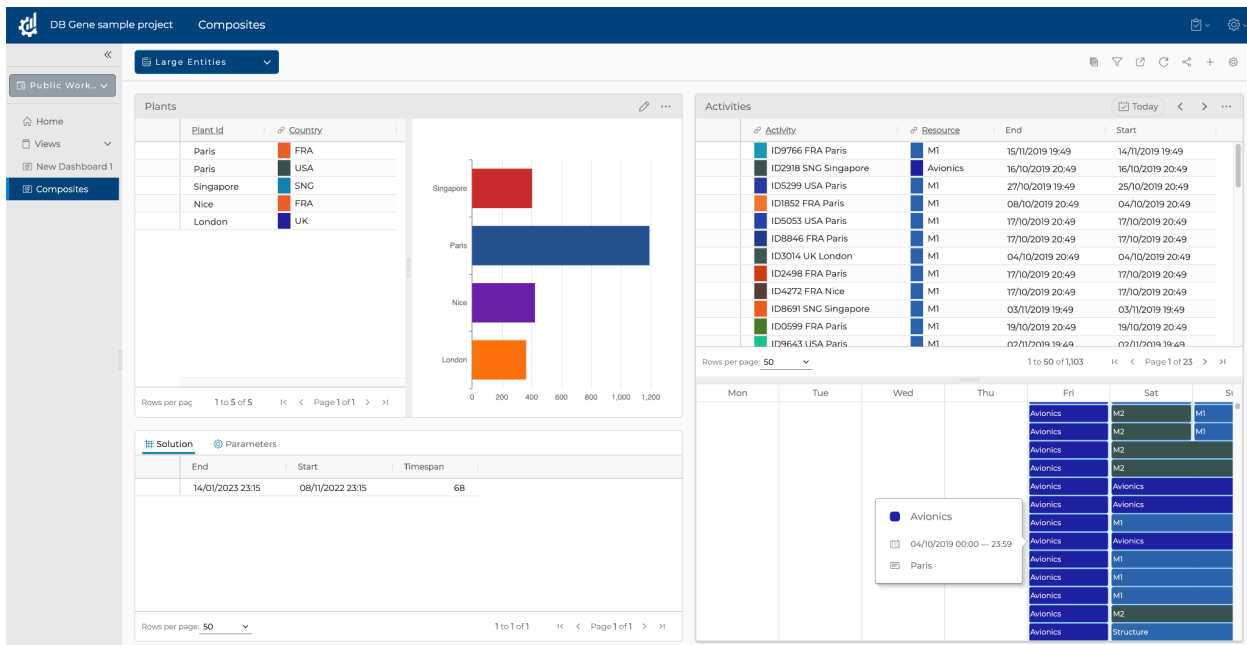
Horizontal Charts

Horizontal bar charts have been added to the out-of-the-box widgets available with DOC 4.0.3



Composite Widgets

Compose multiple widgets in tabs or one next to the other separated by a draggable split bar.

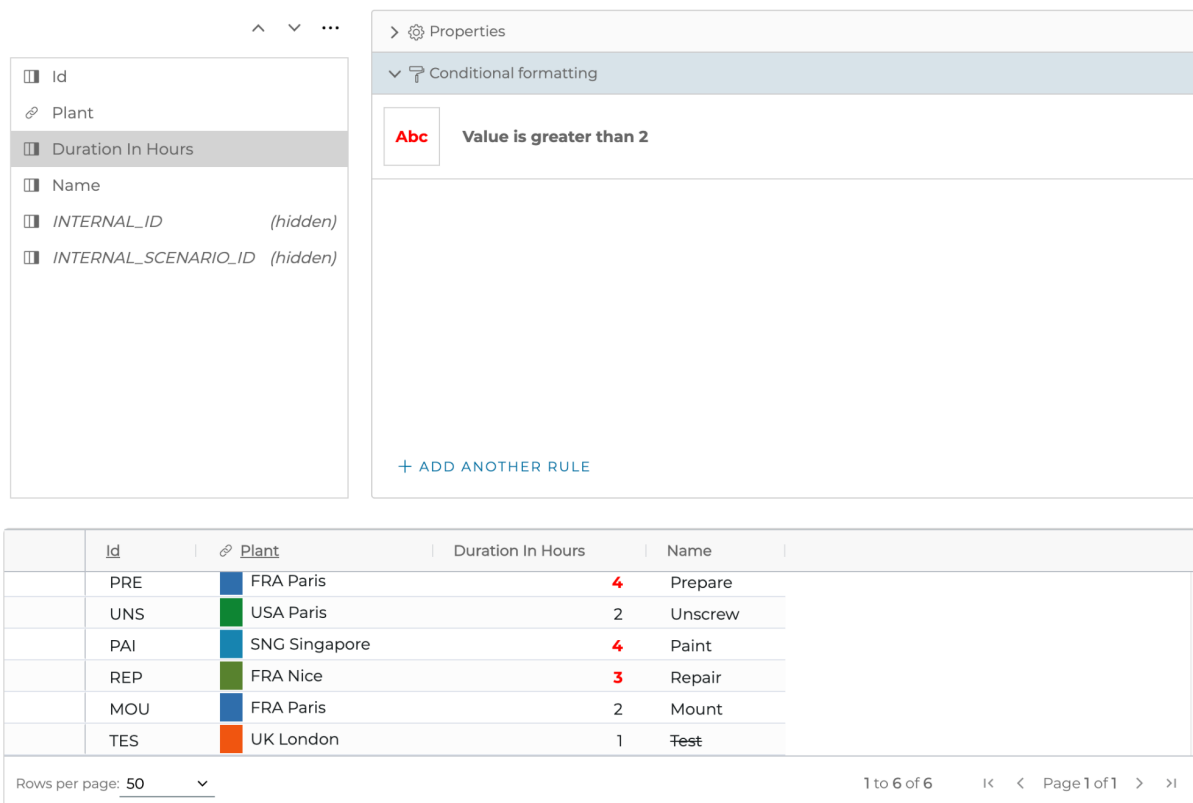


Excel-like data edition

The data edition in DOC tables is as close as possible to Excel, this improves the user experience for those who are used to working in Excel. In this release, we have improved the keyboard shortcuts to move from one cell to another while editing numeric values.

Conditional Formatting in Data-grids

Define some conditional formatting rules depending on the values for numeric and text columns to better visualize data values.

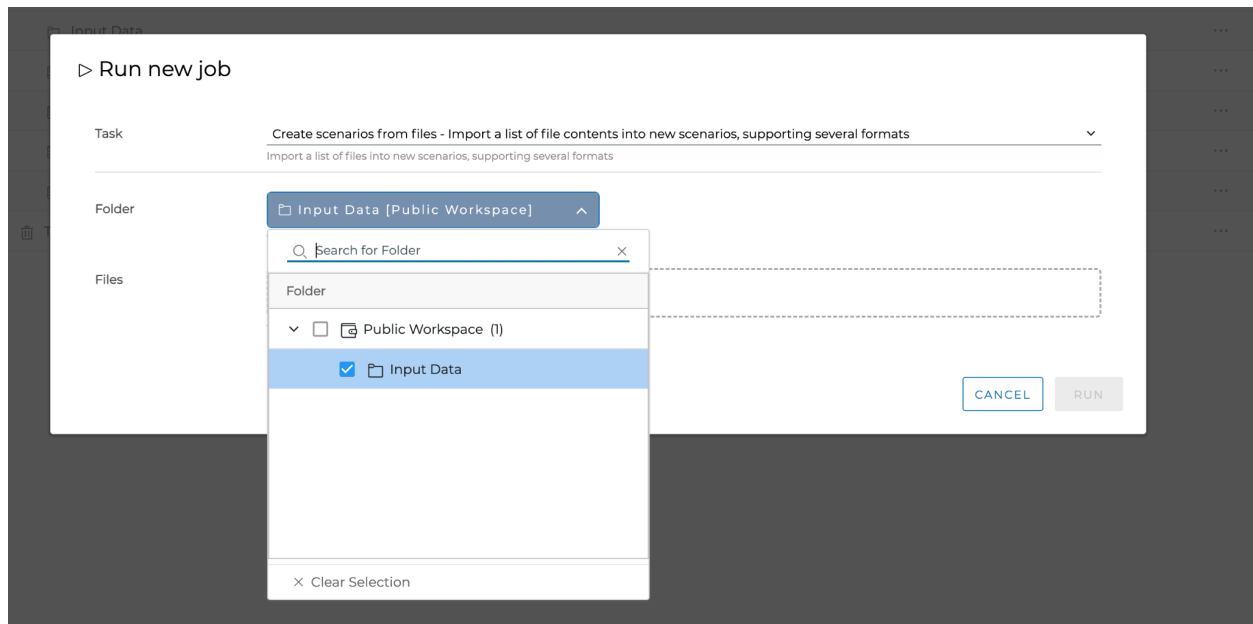


The screenshot displays the 'Properties' panel for a data grid. The 'Conditional formatting' section is active, showing a rule: 'Value is greater than 2' with a red background color. Below the table, the 'Rows per page' is set to 50, and the page number is 1 of 1.

Id	Plant	Duration In Hours	Name
PRE	FRA Paris	4	Prepare
UNS	USA Paris	2	Unscrew
PAI	SNG Singapore	4	Paint
REP	FRA Nice	3	Repair
MOU	FRA Paris	2	Mount
TES	UK London	1	Test

Improvements in Tableau Integration and Task API

- Automatic Tableau integration data mappings: the automatic data types mapping between DOC JDL and Tableau data types has been improved
- Task API: Better integration of Workspace & Folder task parameters



Support for Mac M1/M2

Scaffold build, run and deploy DOC apps from the latest Macs powered by Apple Silicon CPUs.

Job Auto-cleaning

When an application is deployed in production, the Job Auto-cleaning feature helps to periodically clean old jobs based on max-age and/or the maximum number of jobs to keep in the database.

Library Updates

Several libraries and third-party components have been updated in this release for security fixes. The most significant one is the default keycloak packaged, with this version which is now based on the Keycloak-19 — Quarkus version, which provides great performance improvements in terms of startup time and resource usage.

Read more in the [IBM DOC 4.0.3 documentation](#).